

# Wall Heating System

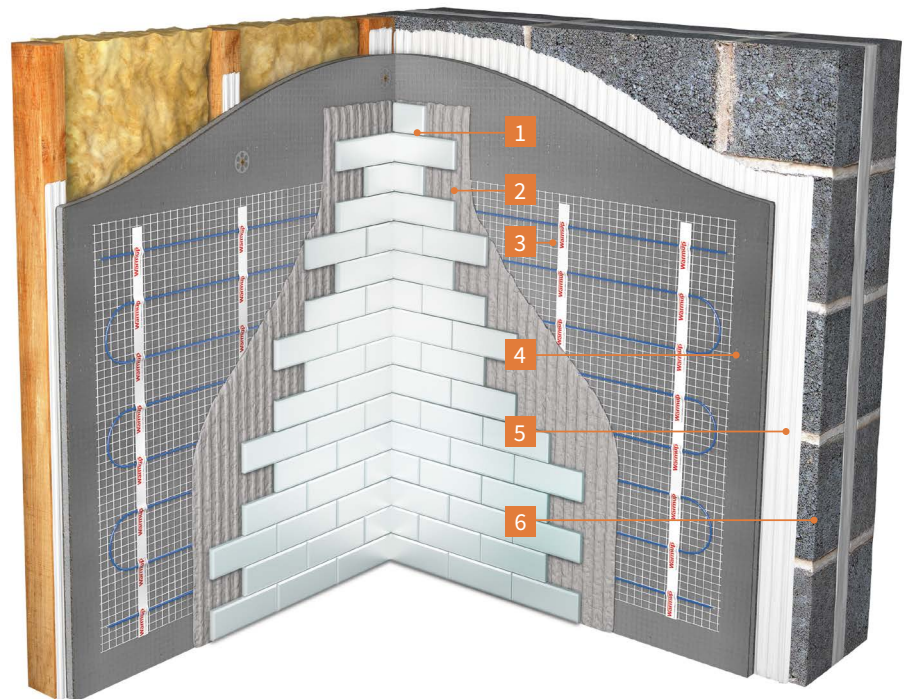
## Overview

The Warmup StickyMat System can be applied to walls as easily as it can be applied to floors, installed within the tile adhesive to provide all round warmth. The self-adhesive mat bonds itself to the wall off the roll, fitting within a standard depth layer of tile adhesive. Wall heating is the ideal solution for rooms with limited floor space to heat, preventing the floor from being the sole source of heat.

This is a scenario common to bathrooms, where the free wall space is often 2-3 times greater than that of the floor, making it much easier to maintain a comfortably warm temperature. When active within a bathroom, the elevated wall temperatures that are heating the room also prevent condensation from forming on them, keeping the room drier and mirrors mounted over them demisted. What's more, the warm, dry walls starve any potential moulds of the moisture they require to grow.

### WALL CONSTRUCTION

- 1 Wall Tiles
- 2 Tile adhesive
- 3 Warmup StickyMat
- 4 Warmup Coated Insulation Boards
- 5 Flexible Adhesive
- 6 Wall Structure



Electric  
Heating System

Warmup Ireland  
Web: [www.warmup.ie](http://www.warmup.ie)  
Email: [ie@warmup.com](mailto:ie@warmup.com)  
Telephone: 1 800 937 429

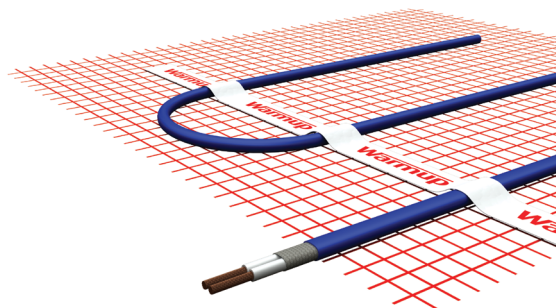
**Warmup**

The world's best-selling floor heating brand™

# Technical Data

## TECHNICAL DATA - Wall Heater



OPERATING VOLTAGE	220 - 240v: 50Hz
IP RATING	IPX7
WIDTH	500mm
MAT THICKNESS	3mm
CABLE THICKNESS	1.8mm
OUTPUT RATING	150W/m <sup>2</sup> 200W/m <sup>2</sup>
INNER INSULATION	ETFE
OUTER INSULATION	ETFE
MIN. INSTALLATION TEMP	5°C
CONNECTION	3m LONG "COLDTAIL" CONNECTION



## Features

- Available in both 150W/m<sup>2</sup> and 200W/m<sup>2</sup> variants
- Ultra-thin, 1.8mm cable multistrand, dual core heating cable is double insulated with an advanced fluoropolymer making it exceptionally tough and easy to tile over
- Pressure sensitive adhesive securely binds the mats to the floor keeping them flat for fast and secure installation

- CE marked for ultimate piece of mind **CE**

- Lifetime Warranty & SafetyNet Installation Guarantee **SAFETY Net™**  

# Technical Data

PRODUCT CODE	AREA TO BE HEATED (m <sup>2</sup> )	SPM 150W/m <sup>2</sup>			
		POWER (W)	LOAD (A)	RESISTANCE (Ω)	RESISTANCE BANDS (Ω)
SPM 1	1	150	0.65	353	335.4 - 370.7
SPM 1.5	1.5	225	0.98	235	223.3 - 246.8
SPM 2	2	300	1.30	176	167.2 - 184.8
SPM2.5	2.5	375	1.63	141	134.0 - 148.1
SPM 3	3	450	1.96	118	112.1 - 123.9
SPM 3.5	3.5	525	2.28	101	96.0 - 106.1
SPM 4	4	600	2.61	88	83.6 - 92.4
SPM 4.5	4.5	675	2.93	78	74.1 - 81.9
SPM 5	5	750	3.26	71	67.5 - 74.6
SPM 6	6	900	3.91	59	56.1 - 62.0
SPM 7	7	1050	4.57	50	47.5 - 52.5
SPM 8	8	1200	5.22	44	41.8 - 46.2
SPM 9	9	1350	5.87	39	37.1 - 41.0
SPM 10	10	1500	6.52	35	33.3 - 36.8
SPM 11	11	1650	7.17	32	30.4 - 33.6
SPM 12	12	1800	7.83	29	27.6 - 30.5
SPM 15	15	2250	9.78	24	22.8 - 25.2

PRODUCT CODE	AREA TO BE HEATED (m <sup>2</sup> )	2SPM 200W/m <sup>2</sup>			
		POWER (W)	LOAD (A)	RESISTANCE (Ω)	RESISTANCE BANDS (Ω)
2SPM 0.5	0.5	100	0.44	529	502.6 - 555.5
2SPM 1	1	200	0.87	265	251.8 - 278.3
2SPM 1.5	1.5	300	1.30	176	167.2 - 184.8
2SPM 2	2	400	1.74	132	125.4 - 138.6
2SPM 2.5	2.5	500	2.17	106	100.7 - 111.3
2SPM 3	3	600	2.61	88	83.6 - 92.4
2SPM 3.5	3.5	700	3.04	76	72.2 - 79.8
2SPM 4	4	800	3.48	66	62.7 - 69.3
2SPM 4.5	4.5	900	3.91	59	56.1 - 62.0
2SPM 5	5	1000	4.35	53	50.4 - 55.7
2SPM 6	6	1200	5.22	44	41.8 - 46.2
2SPM 7	7	1400	6.09	38	36.1 - 39.9
2SPM 8	8	1600	6.96	33	31.4 - 34.7
2SPM 9	9	1800	7.83	29	27.6 - 30.5
2SPM 10	10	2000	8.70	26	24.7 - 27.3

NOTE: To cover larger areas, several kits should be used together.

# WARMUP COMPONENTS

## Insulation Boards

Warmup® Insulation Boards are a water resistant, insulated tile backer board made of extruded polystyrene, faced on both sides with a fibreglass mesh embedded into a thin cement polymer mortar.

They have high thermal insulation properties for energy efficiency and an added benefit of sound absorption.

### INSBOARD - TECHNICAL SPECIFICATIONS

MODEL	THICKNESS (mm)	WIDTH (mm)	LENGTH (mm)	WEIGHT (kg)	R VALUE (m <sup>2</sup> .K/W)
INSBOARD6MM	6	600	1250	1.95	0.16
INSBOARD(PK1)	10	600	1250	2.22	0.28
INSBOARD20MM	20	600	1250	2.48	0.58
INSBOARD50MM	50	600	1250	3.26	1.50



**Warmup Insulation Boards have zero Ozone Depletion Potential (ODP) and a Global Warming Potential (GWP) of less than 5**

## Thermostat



### 4iE® SMART WIFI THERMOSTAT

For Central Heating and Underfloor Heating Systems

Connected to the internet by WiFi, it can be controlled from a smart phone, tablet or computer as well as its own touchscreen interface. It learns how homeowners use their heating and the unique way each zone reacts. It uses this knowledge to suggest ways to save energy, such as what temperature should be set when the area is not in use and when the heating can be turned off earlier with no noticeable impact on comfort.

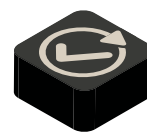
Personalise your 4iE with uploadable photo backgrounds and changeable, textured overlays.



**SmartGeo™**  
Always at the right temperature automatically, and up to 25% lower energy usage. Just like magic.



**EasySwitch™**  
Always on the best tariff, automatically. Saving on average £210.



**Easy to use**  
Simple and secure set up using WiFi, with 24/7 technical support.